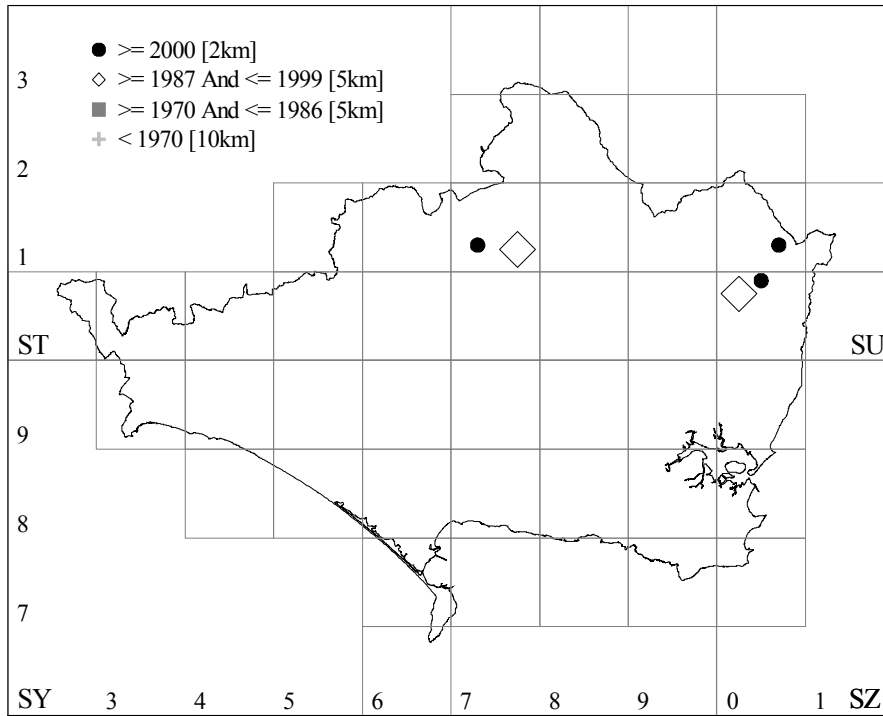


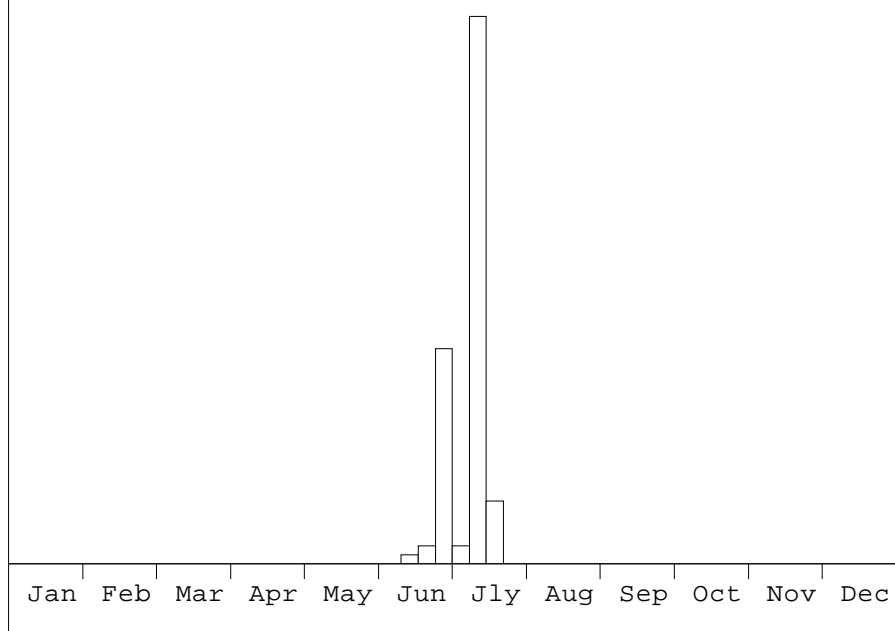
Nolidae

2075 *Meganola strigula* ([Denis & Schiffermüller], 1775) Small Black Arches

Status: Na
Recorded: 1995 - 2004
Earliest adult: 06-15 (15 Jun 2003)
Latest adult: 07-21 (21 Jul 1997)
Records: 10
Sites: 6



Individuals max of 61 in week 28
[n = 97 Min.]



Nolidae

2076 *Meganola albula* ([Denis & Schiffermüller], 1775)

Kent Black Arches

Status: Nb

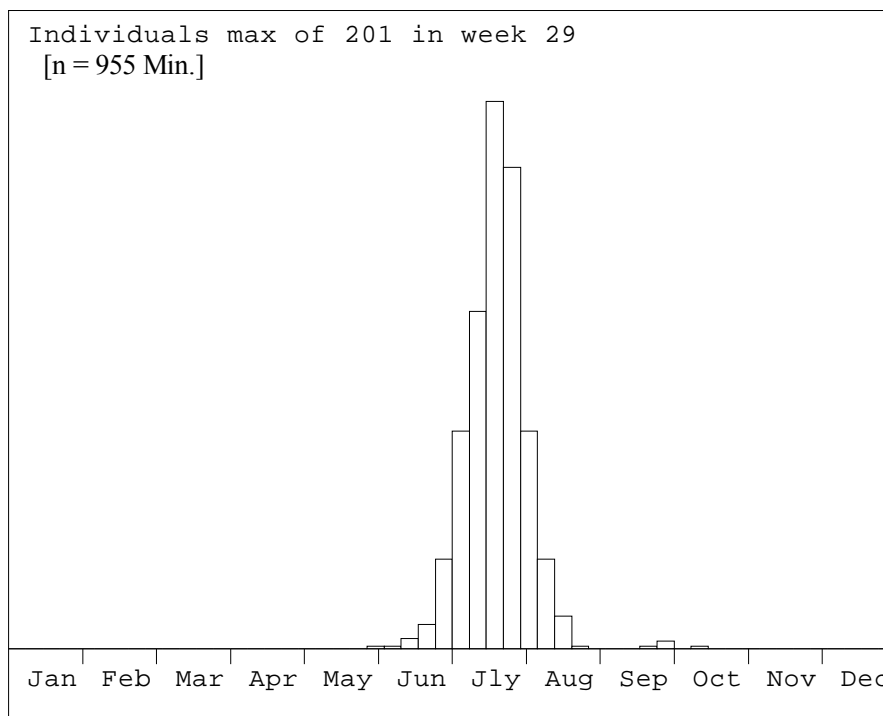
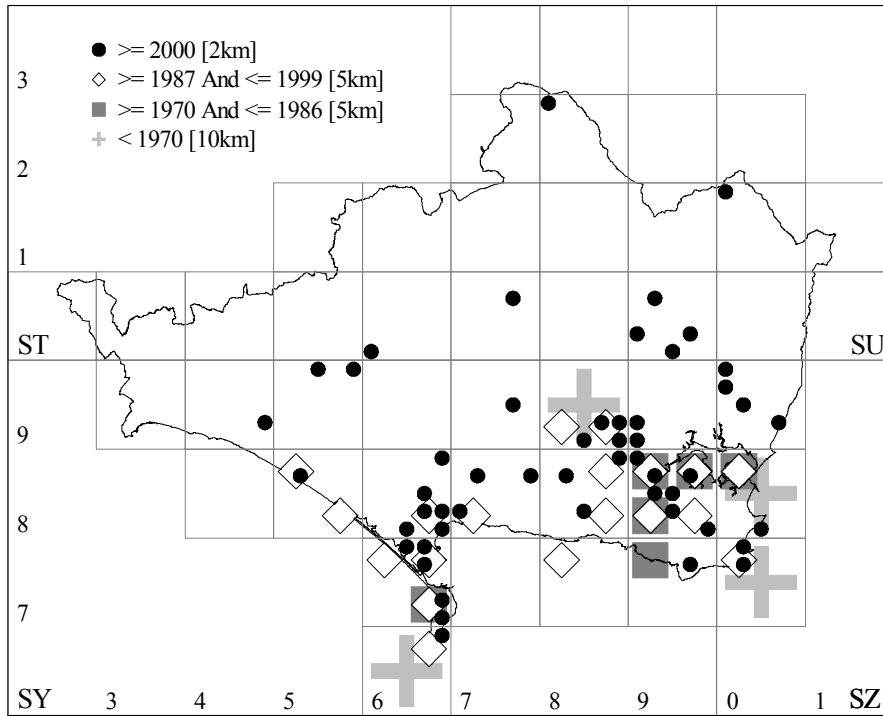
Recorded: 1935 - 2008

Earliest adult: 06-01 (01 Jun 1983)

Latest adult: 10-09 (09 Oct 2006)

Records: 651

Sites: 109



Nolidae

2077 *Nola cucullatella* (Linnaeus, 1758)

Short-cloaked Moth

Status: Common

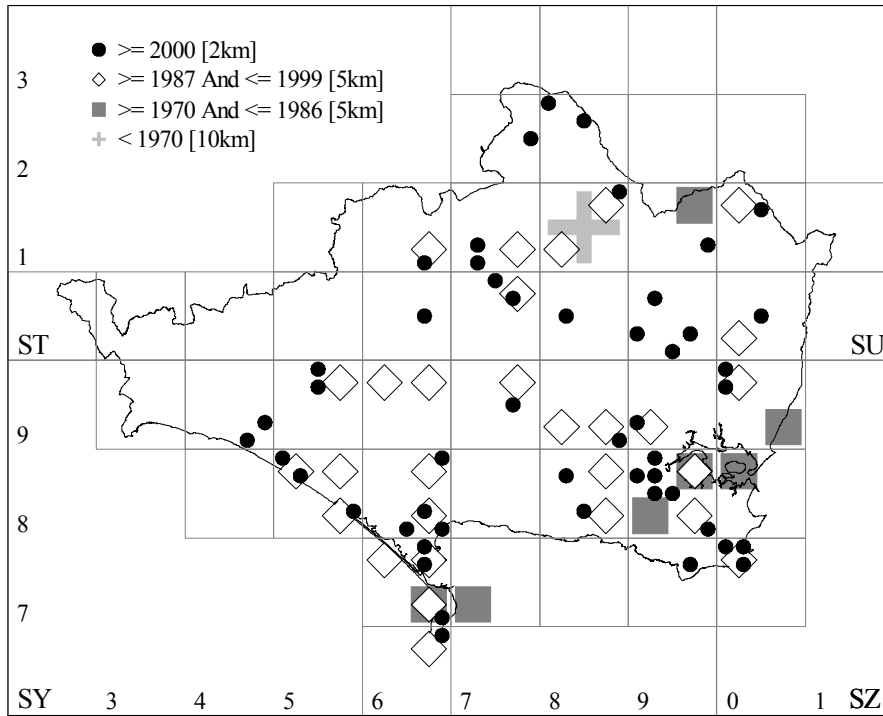
Recorded: 1966 - 2008

Earliest adult: 06-04 (04 Jun 1996)

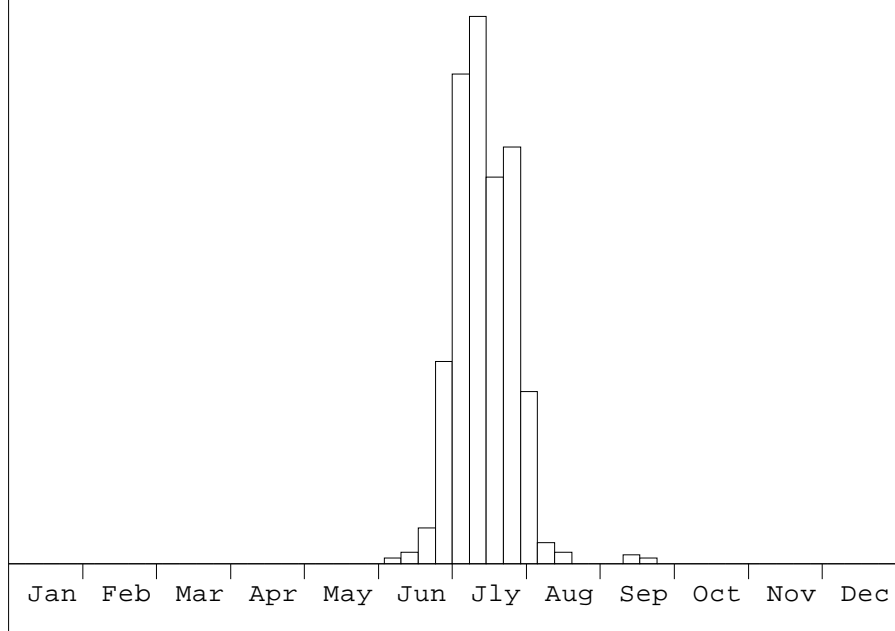
Latest adult: 09-18 (18 Sep 2006)

Records: 560

Sites: 99



Individuals max of 181 in week 28
[n = 928 Min.]



Nolidae

2078 *Nola confusalis* (Herrich-Schäffer, 1847)

Least Black Arches

Status: Local

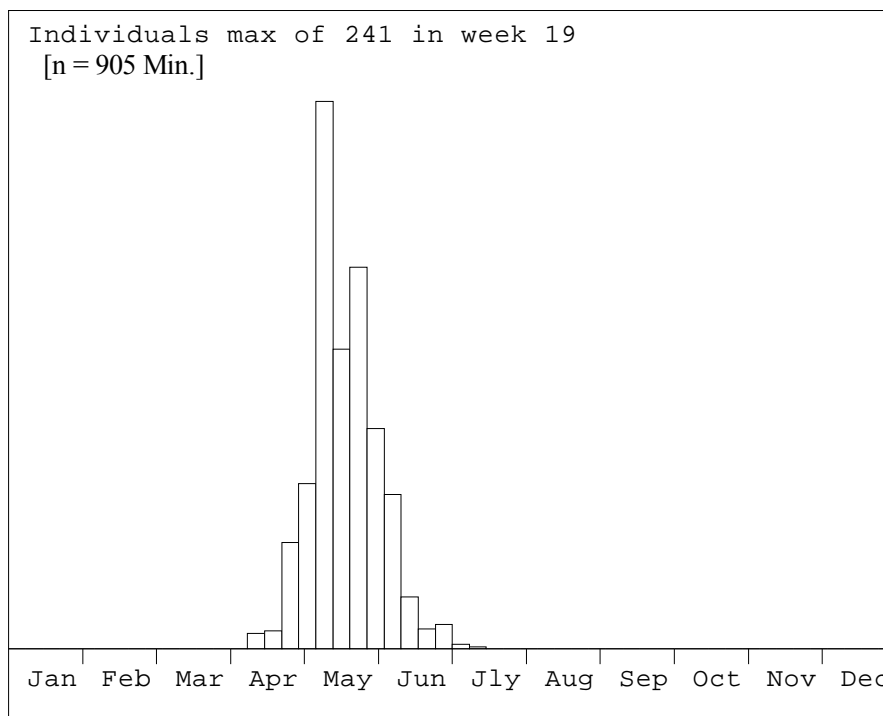
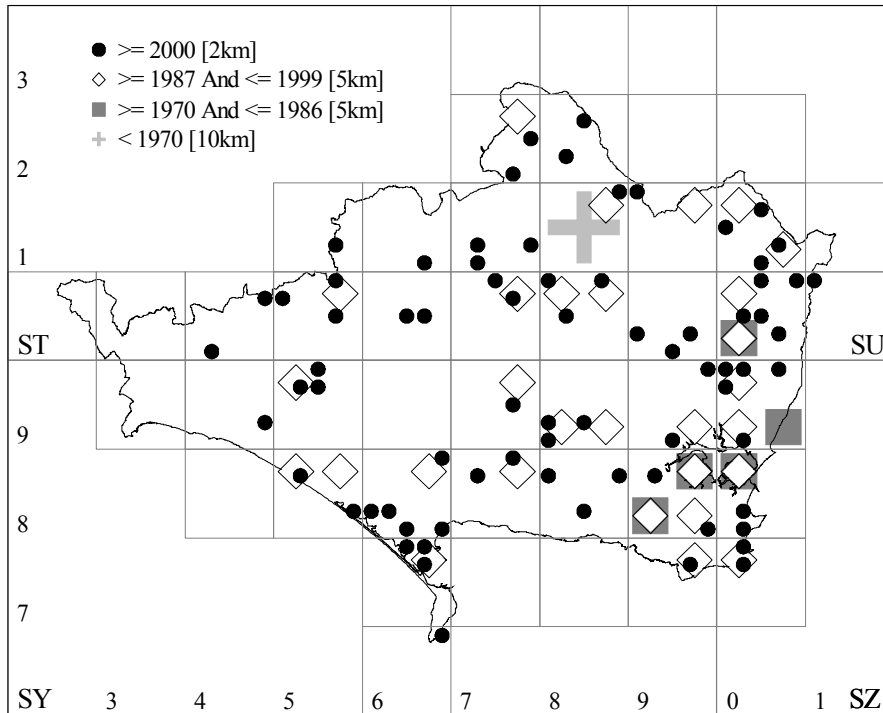
Recorded: 1955 - 2008

Earliest adult: 04-10 (10 Apr 1997)

Latest adult: 07-14 (14 Jul 1995)

Records: 552

Sites: 126



Nolidae

2079a *Nola chlamitulalis* (Hübner, 1813)

Jersey Black Arches

Status: Vagrant/Accidental

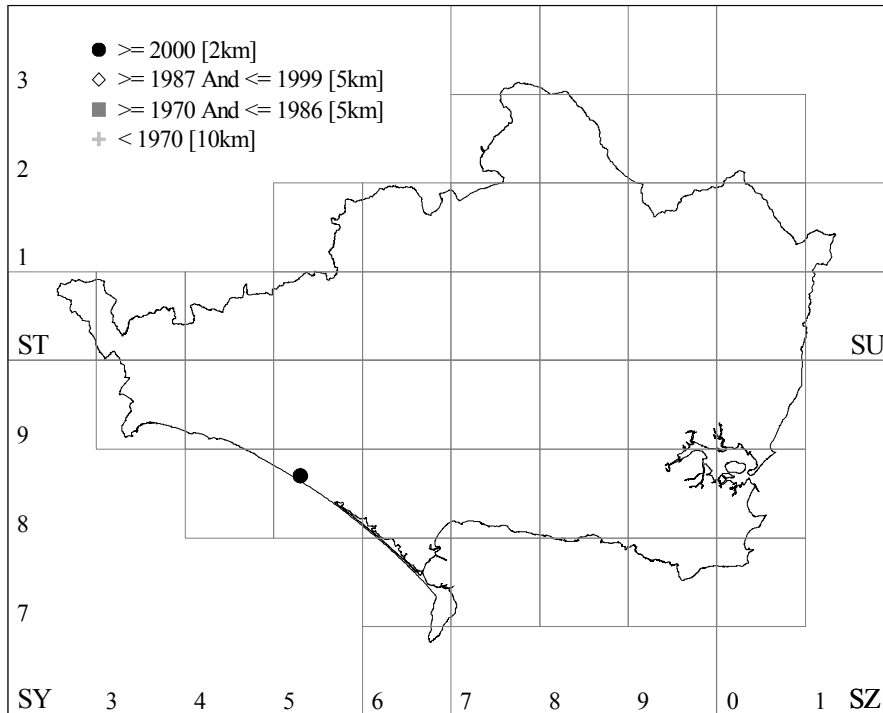
Recorded: 2005 - 2005

Earliest adult: 06-19 (19 Jun 2005)

Latest adult: 06-19 (19 Jun 2005)

Records: 1

Sites: 1



Individuals max of 1 in week 25
[n = 1 Min.]

